

VSL LED High Bay Series (70W, 100W & 150W)


How to Order:

Power		VSL-HB150-A 2	Beam Angle	
70	70W		1	33° (Narrow Beam)
100	100W	2	69° (Normal Beam)	
150	150W	3	138° (Wide Beam)	

Driver Option

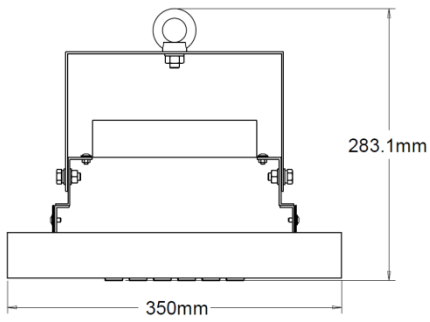
A	IP65 rated. Constant current level can be adjusted through internal potentiometer.
B	IP67 rated. Constant current level adjustable through output cable with 1~10Vdc or 10V PWM signal or resistance.
C	IP67 rated. Timer dimming function.

Specifications

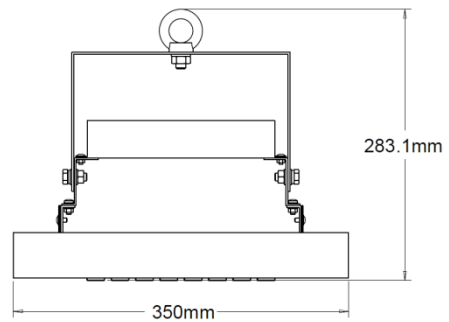
Picture			
Model	VSL-HB70	VSL-HB100	VSL-HB150
Replacement	150W MH	250W MH	400W MH
Power	70W	100W	150W
Lumen	> 7,500 lm	> 10,700 lm	> 15,600 lm
System Efficacy	> 110 lm/W	> 108 lm/W	> 106 lm/W
Light Output Ratio	99%	99%	99%
Optical Efficiency	91%	91%	91%
Driver Efficiency	92%	93%	94%
Input Voltage	90 ~ 305 Vac	90 ~ 305 Vac	90 ~ 305 Vac
Frequency Range	47 ~ 63 Hz	47 ~ 63 Hz	47 ~ 63 Hz
Power Factor	PF>0.98/115VAC, PF>0.96/230VAC, PF>0.93/277VAC at full load		
Harmonic Distortion	< 20%	< 20%	< 20%
Lifespan	50,000 hrs	50,000 hrs	50,000 hrs
Lumen Maintenance	LM- 80 (80% at 50,000)	LM- 80 (80% at 50,000)	LM- 80 (80% at 50,000)
Beam Angle	33° (Narrow Beam) 69° (Normal Beam) 138° (Wide Beam)	33° (Narrow Beam) 69° (Normal Beam) 138° (Wide Beam)	33° (Narrow Beam) 69° (Normal Beam) 138° (Wide Beam)
Light Source	CREE XP-G2 (36pcs)	CREE XP-G2 (36pcs)	CREE XP-G2 (48pcs)
Colour Temperature	> 5700K	> 5700K	> 5700K
CRI	70 Ra	70 Ra	70 Ra
Housing Material	Mild steel + powder coating	Mild steel + powder coating	Mild steel + powder coating
Operating Temperature	-25 °C ~ +70°C	-25 °C ~ +70°C	-25 °C ~ +70°C
IP	IP20	IP20	IP20
Safety & EMC	CE, UL, EN55015, EN61000-3-2, EN61000-4-2,3,4,5,6,8,11, EN61547		

Dimension

70W & 100W



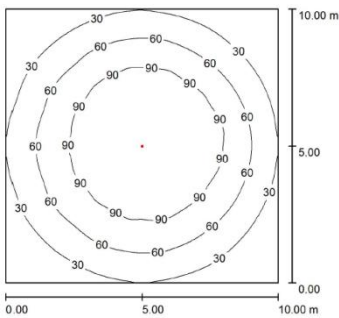
150W



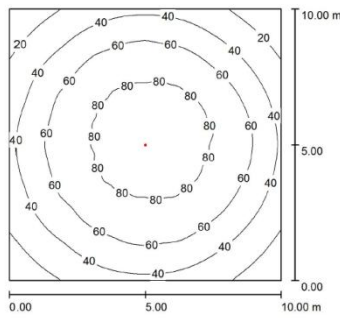
DIALux Simulation of Illuminances for Single Lamp

Power \ Height	7 m	8 m	9 m	10 m
70W	117 lux	89 lux	71 lux	57 lux
100W	162 lux	124 lux	98 lux	79 lux
150W	235 lux	180 lux	142 lux	115 lux

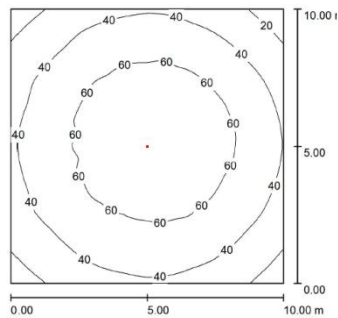
70W @ 7m



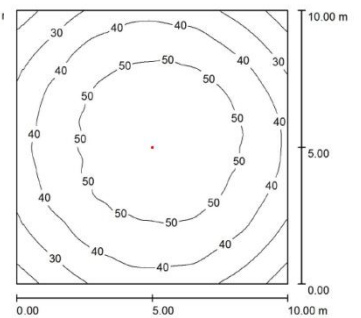
70W @ 8m



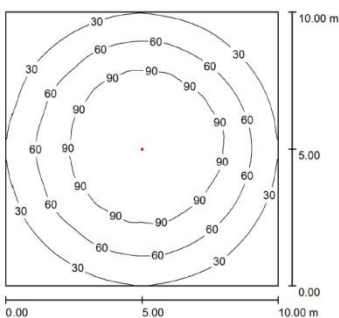
70W @ 9m



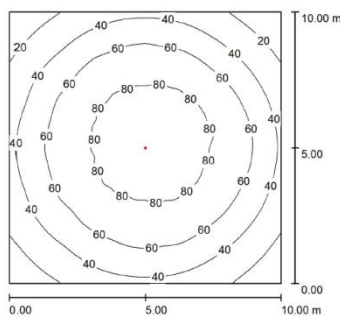
70W @ 10m



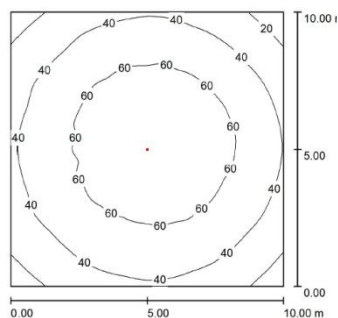
100W @ 7m



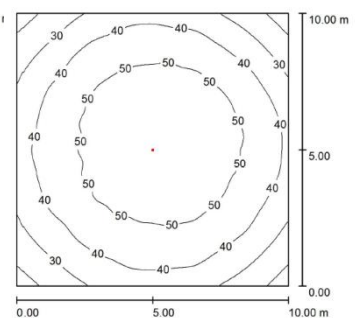
100W @ 8m



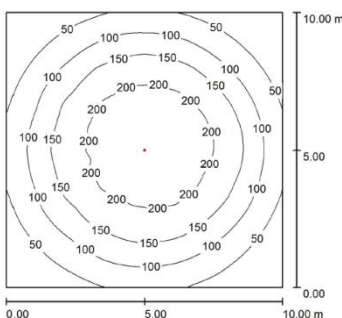
100W @ 9m



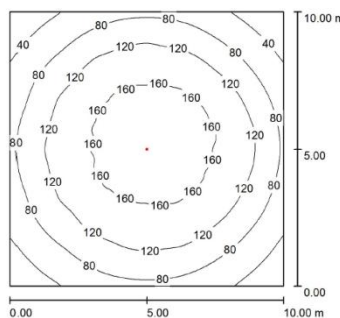
100W @ 10m



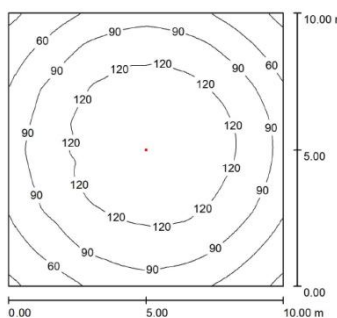
150W @ 7m



150W @ 8m



150W @ 9m



150W @ 10m

